



UNIFIED FIRE HEAVY RESCUE TRAINING

Metro Water recently hosted three Heavy Rescue teams from the Unified Fire Authority (UFA) at the Point of the Mountain Water Treatment Plant (POMWTP) on three separate training days in March. The POMWTP is in the emergency services area covered by the Draper City Fire Department; however, due to the depth of several vaults for access to structures and areas in our facilities, as well as other potential confined space conditions, a UFA Heavy Rescue team would need to respond in the event of an emergency involving injured or trapped personnel.

Hosting the UFA crews for training allows Metro Water the opportunity to collaborate with the fire and rescue responders that would most likely be involved in an actual on-site emergency. The training provides UFA personnel with familiarity with our facilities and the highest-risk areas with the greatest potential for an incident.

During each simulated rescue event, UFA Heavy Rescue and Haz Mat crews arrived at our facility and staged their apparatus. Utilizing their training, expertise, and equipment, the UFA made a safe entry down the deep-vault ladder into the pipe. They then walked over 600 feet into the pipe to locate, assess, and prepare the 'injured and trapped' workers for extrication. UFA staff worked effectively, safely, and professionally during these successful training events.



MAR ENTERS PILOT TESTING PHASE

Metro Water has completed construction of the Managed Aquifer Recharge (MAR) facilities at the Little Cottonwood Water Treatment Plant in coordination with Hansen, Allen & Luce and COP Construction. This MAR project enhances the reliability, resiliency, and sustainability of the water supply in Salt Lake County.

Metro Water typically anticipates operating the Surface Infiltration Basins (SIB) annually during the spring. This year, an early runoff created an opportunity to begin operations sooner than expected. With the permit renewal approved and all required sampling completed on time, we began capturing water from Little Cottonwood Creek on March 26 and directing it to the infiltration basins.

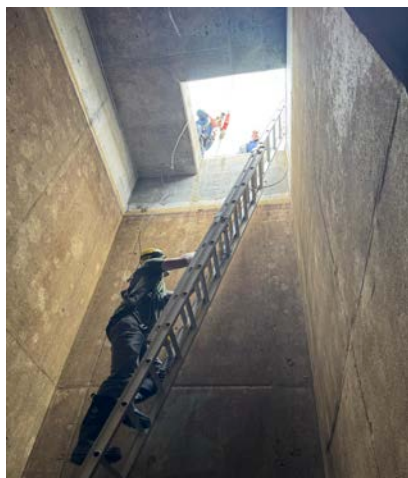
This marks the official start of the first of five years of pilot testing required by the State of Utah.



MAINTENANCE IN THE EQ BASINS

Maintenance staff recently replaced the remaining electromagnetic flow meters, installed five new meters, and added an additional flow meter on the discharge side of the equalization (EQ) basin pumps. This work required extensive grinding and cutting to properly fit the new meters into place.

The newly installed flow meter will allow operators to accurately monitor and control the flow directed to the EQ pumps. To complete the project, one more flow meter will be installed in the vault located just outside the EQ building. This final step will require a plant shutdown, planned for late April pending schedule confirmation.



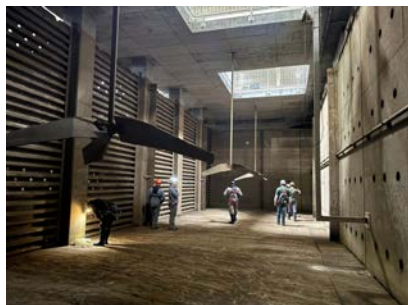
POMWTP START-UP INSPECTION

The Point of the Mountain Water Treatment Plant is inspected annually before startup to identify and repair deficiencies before the beginning of the water year. The plant was secured for entry, and the confined space paperwork was signed off before entry to ensure staff safety. The plant was thoroughly inspected, and only a few issues were found.

The Waste Wash Water Basin (WWWB) was found to have media from the filters that had deposited into mounds over time, and some minor bolts and fasteners needed to be tightened. Staff decided to clean the WWWB a few weeks later. The work has since been completed, and the plant is ready for startup.

One of the highlights of the inspection was entering the ozone contact chamber, which hadn't been entered by staff in 12 years. Other than some small deposits, it was in great shape.

This annual pre-startup inspection ensures the quality of the water and the continual delivery from the Point of the Mountain Water Treatment Plant throughout the water year.



METRO WATER LEASE WATER TO THE GSL

Metro Water has recently partnered with the Great Salt Watershed Enhancement Trust (Trust) to lease 2,500 acre-feet of Ontario Drain Tunnel Water to the Great Salt Lake. As part of the partnership, staff from the Trust, the Department of Natural Resources, Salt Lake City Public Utilities, and Sandy City spoke with Metro Water General Manager Annalee Munsey at a press event announcing the partnership and lease of the water.

This is an exciting opportunity made possible by the conservation efforts of our member cities and the diligence of our staff.

